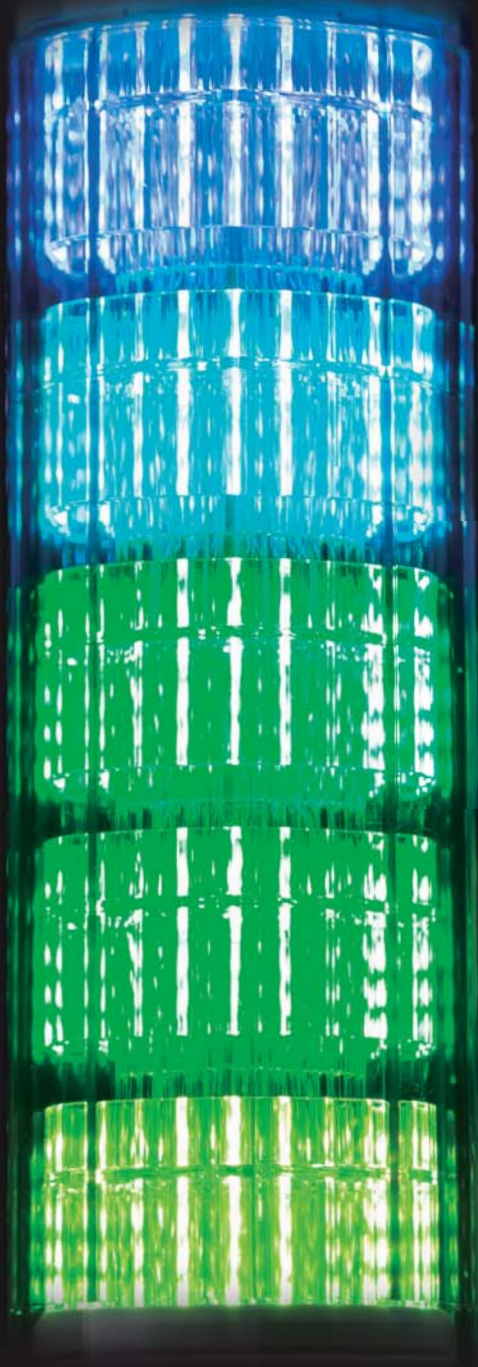
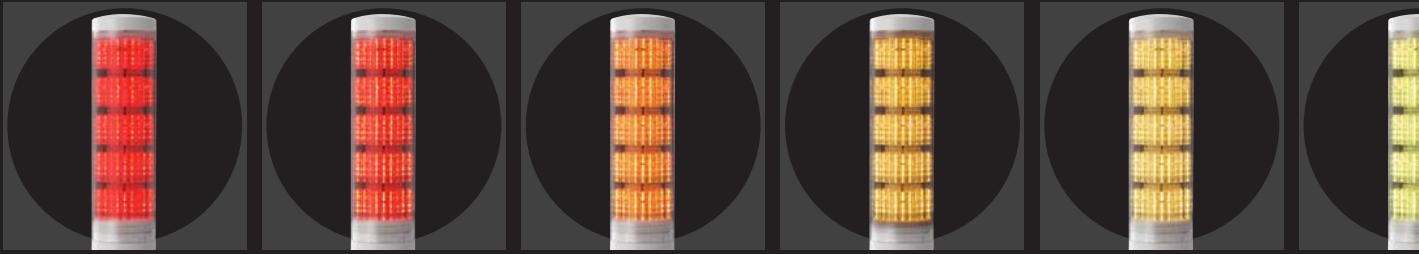


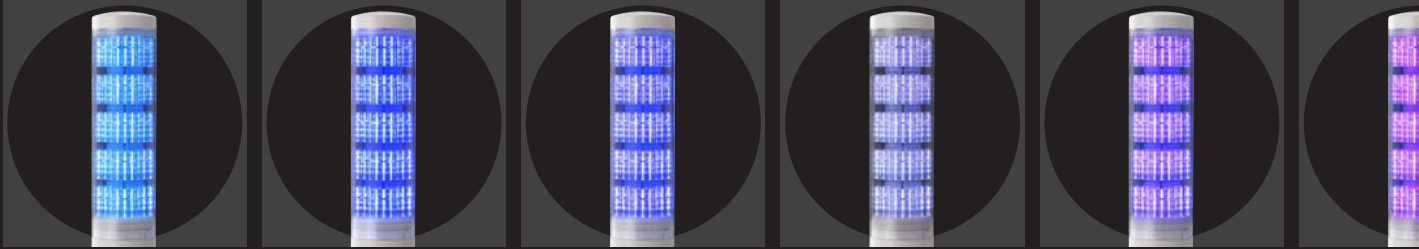
See More, Do More!

Embedded Software Program,
To set a variety of colors or use different mode features.





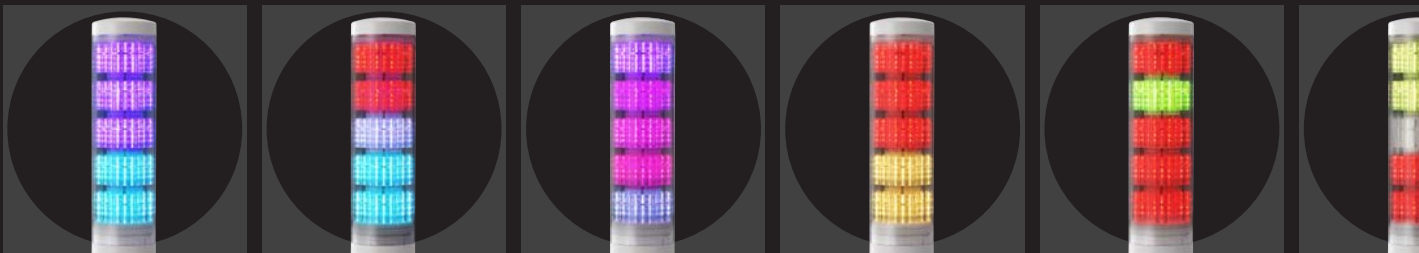
Full Color Display



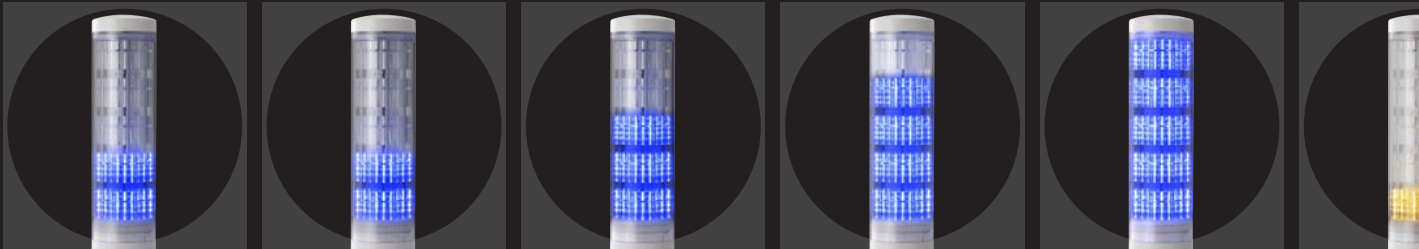
See More, Do More

Display a variety of colors in various ways to improve

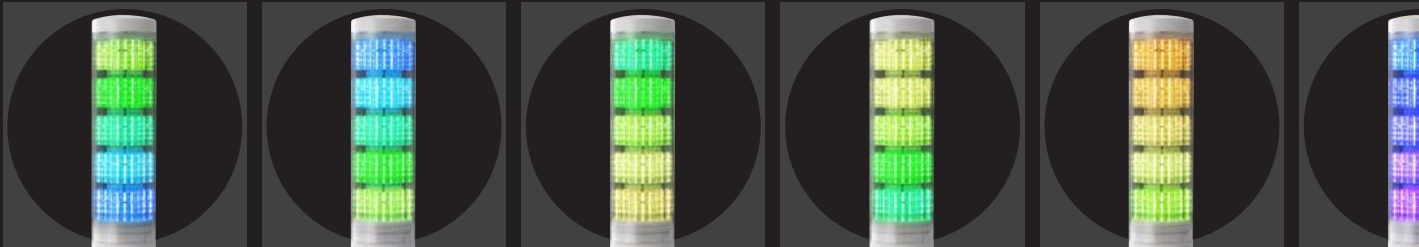
PATLITE innovation continues with improved functionality to drive productivity, improve efficiencies, and reduce waste. One of our continuous improvements in your process. In order to make your lives more "comfortable", our theme of "Visual Information" has become easier to do. Here, we introduce the LA6 multi-informational signal tower. It can be easily manipulated to display various color ways in order to communicate "visual information" in a manner that is intuitive and easy to understand. The applications are endless. As an information display equipment, we will strive to provide society the best products in order to meet your expectations for "Safety



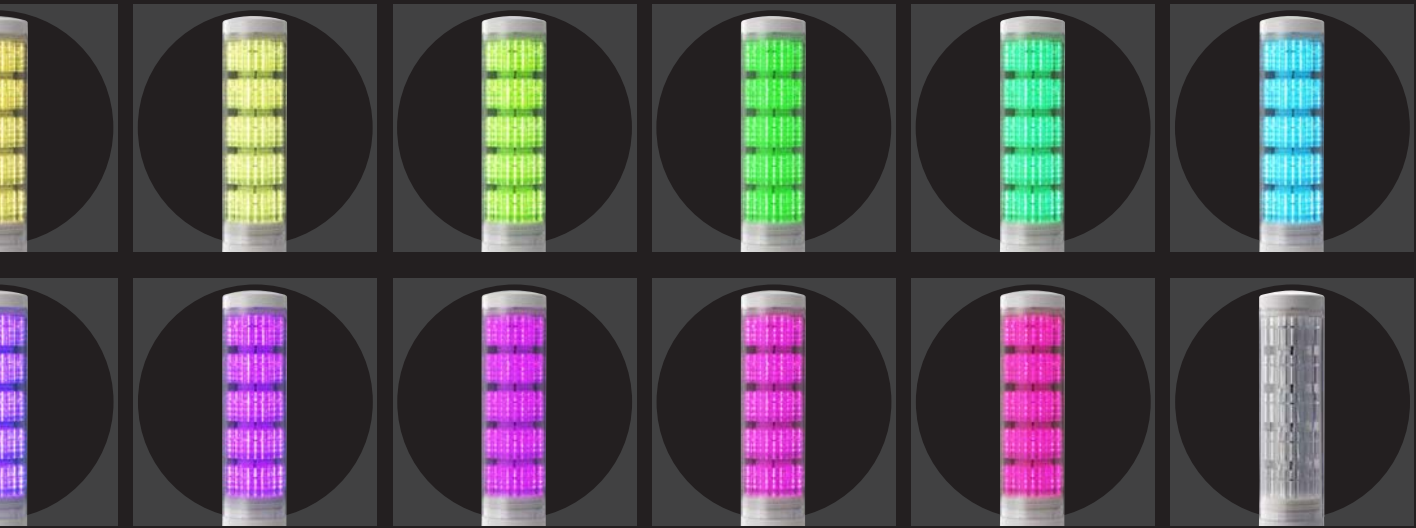
Separate Display



Tact time Display



Gradition Display



ore!

your processes.

of our basic themes is to help you make
 been a persistent one by making things
 rs and combination of colors in various
 endless. As a pioneer manufacturer of
 Security, and Comfort".

- Indicate abnormal conditions with a variety of color patterns.

Can freely set up multiple colors.

For example, a serious condition can be indicated with the "All-point Lighting" where the entire signal tower is the same color, thus conveying important information.

- Use "Operating Modes" to enhance a visual status condition.

The downloadable program can be used to make patterns change at set intervals so the signal tower can be used to count time or set a pace.

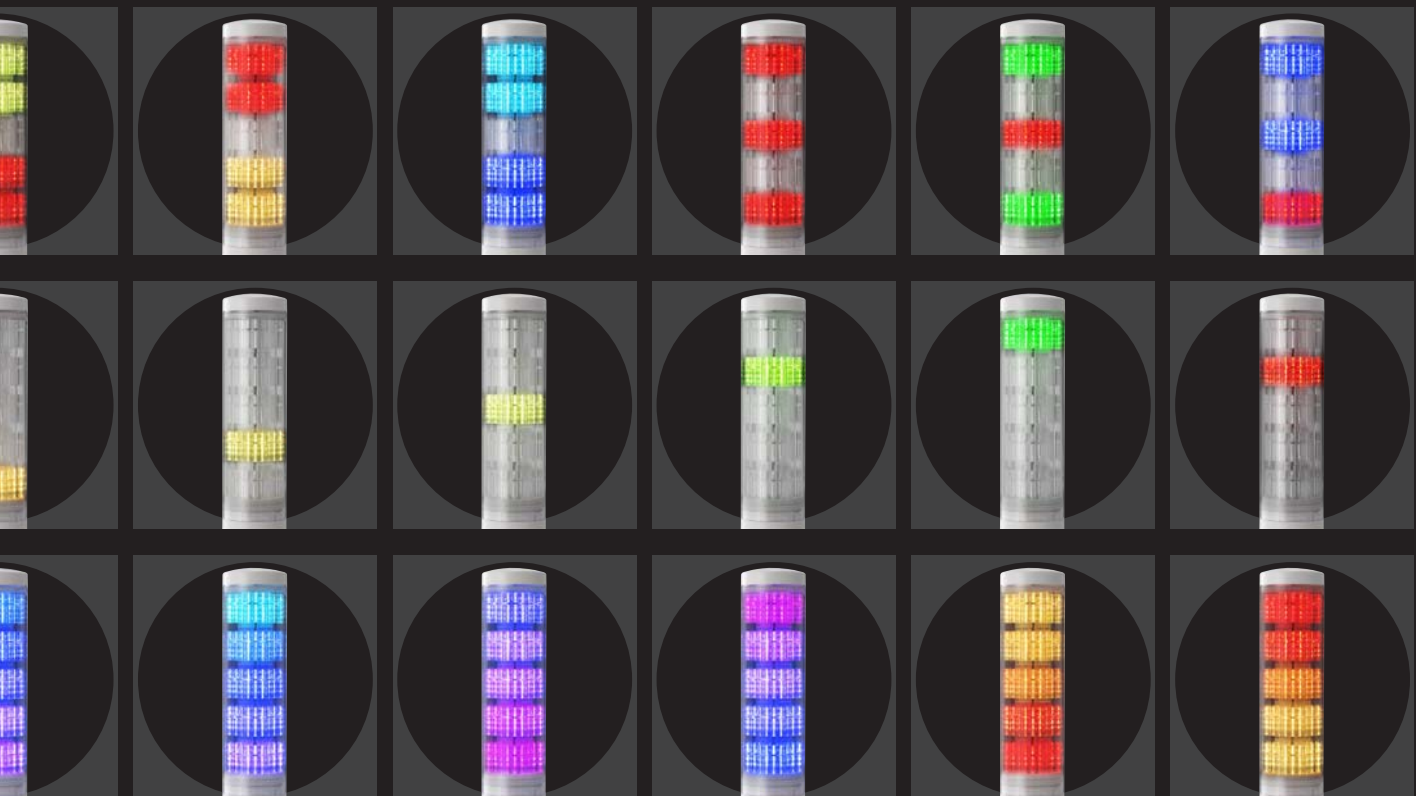
- Simple and easy to use complimentary programming software

The downloadable complimentary programming software can be used to easily control which colors are displayed and how they are to behave.

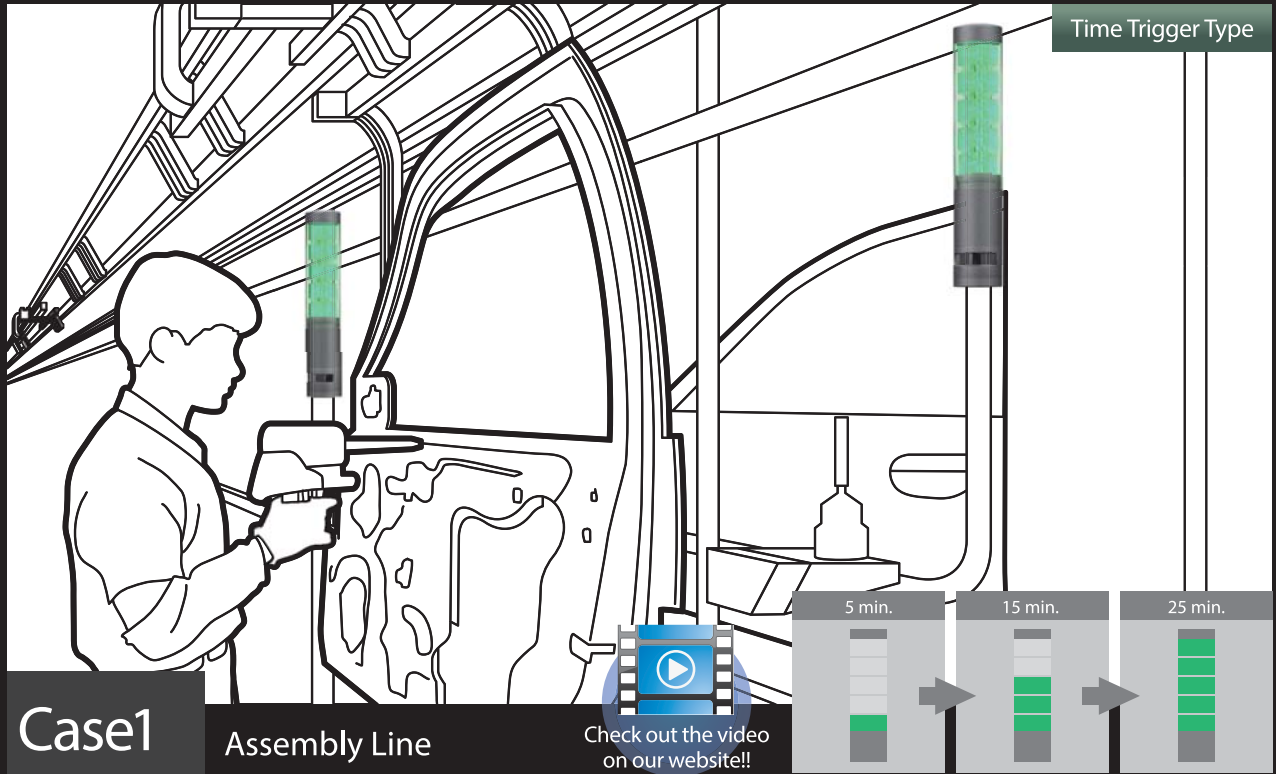
REVOLITE™

"More active, more flexible and beautiful"

"Revolute™" was made to redefine "light" and to make the environment more active, more beautiful, and more flexible.



See More to reduce downtime, improve productivity, and improve efficiency

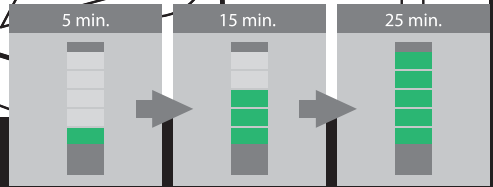


Case1

Assembly Line

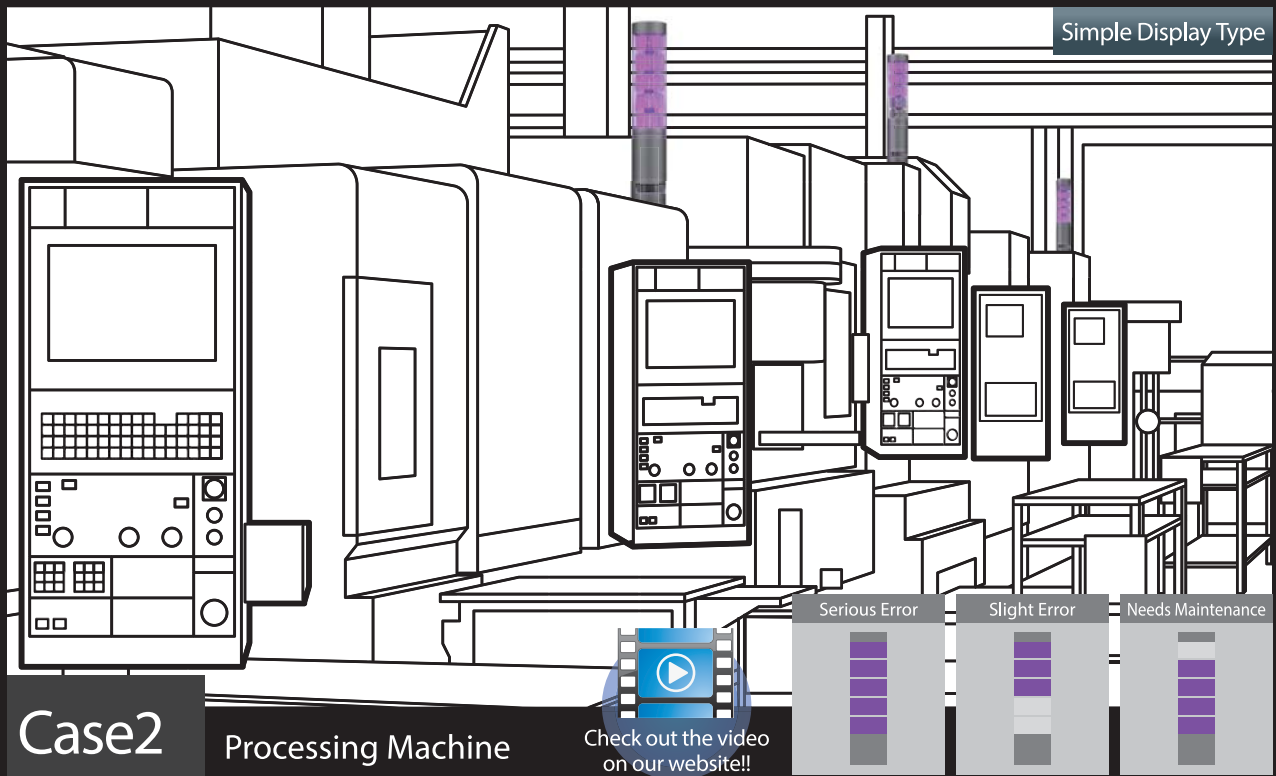
Check out the video on our website!!

Productivity can be improved by assigning a task for each tier that is lit so that operators can know if they are on pace or not. No external controls are required to set up the takt time.



Lighting Method: "Takt Time Display"

Display elapsed time in "real time" by counting the number of tiers that are lit.

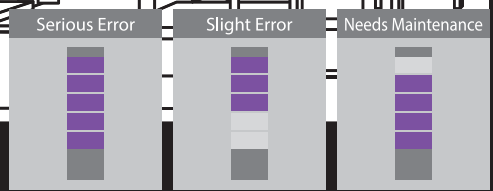


Case2

Processing Machine

Check out the video on our website!!

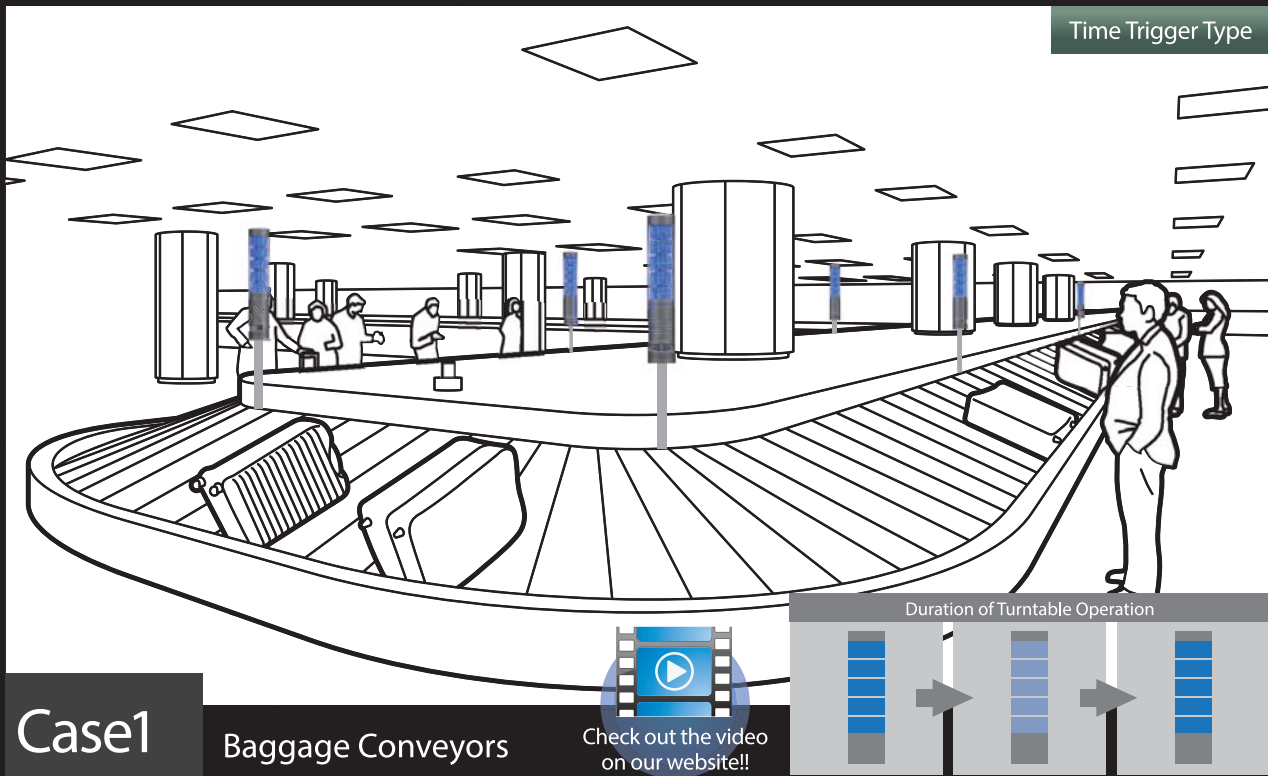
When there are many processing machines it is important that any trouble or need for maintenance is quickly communicated. This can be easily accomplished with predetermined color arrays, as shown on the example on the right. The various colors or intensity of colors will allow problems to be addressed quickly, thus improving productivity and reducing down time.



Lighting Method: "Detailed Error Display"

The level of information (serious error, slight error) can be expressed colorfully.

See More through intuitive, quietly visual, and reliable communication

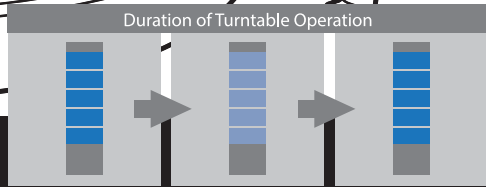


Case1

Baggage Conveyors

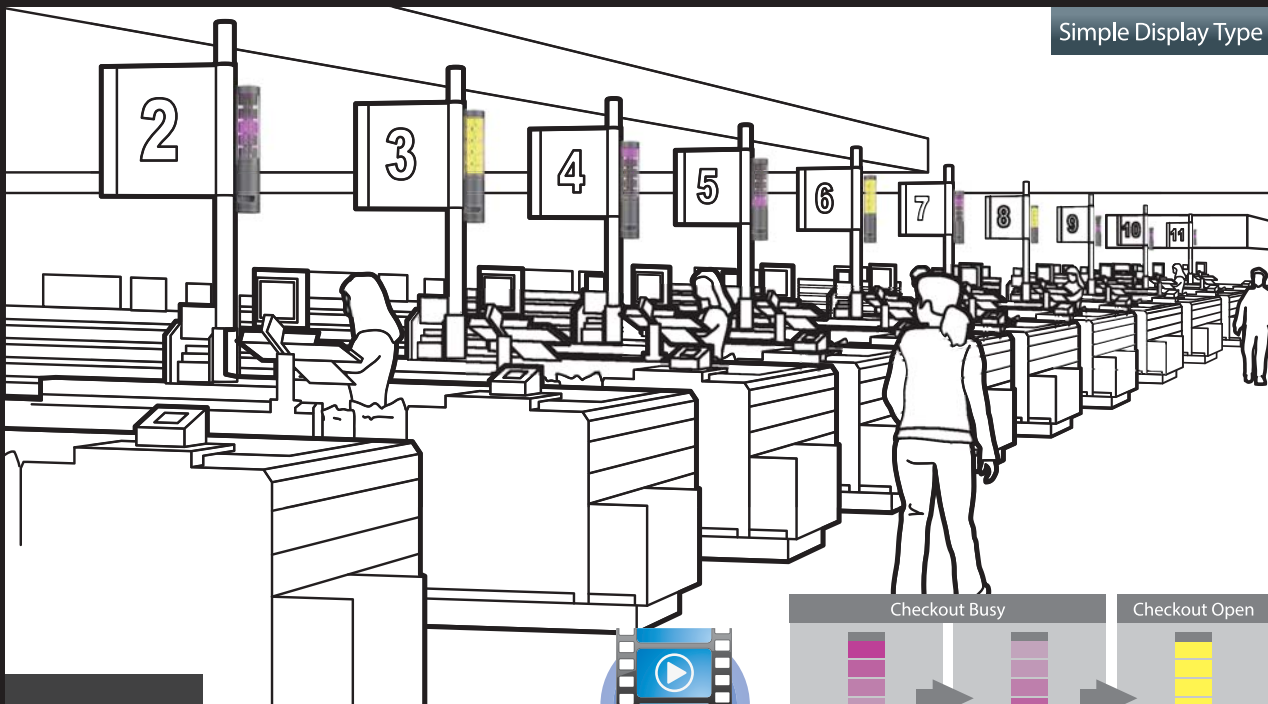
Check out the video on our website!!

Flashing lights can help alert people that a baggage conveyor is about to start, thus reducing accidents. Different color lights can also be used to match airline colors so it's easier for passengers to know which carousel to go to.



Lighting Method: "Sine Curve Display"

Changing the light intensity allows for a more subtle way to communicate operation status.

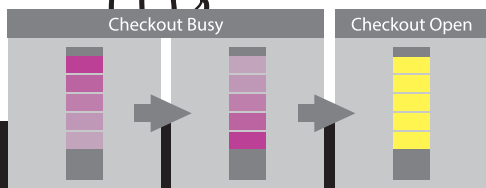


Case2

Check-out Registers

Check out the video on our website!!

Different colors can designate a busy or open checkout register in larger supermarkets. This allows customers to be able checkout quicker and balances cashier's workload. Special light patterns can also be used to communicate between cashiers and their supervisors or other employees.



Lighting Method: "All-point Lighting Display"

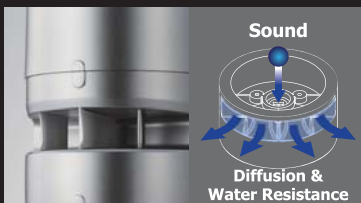
An "All-point Lighting Display" can use all sections of the LA6, such as displaying the light sequentially to simulate movement at a checkout register, and an all-solid color can be displayed when the lane is open.



A new lens design optimizes visibility. The newly developed lens design efficiently diffuses LED light so that it is unmistakably visible, even from great distances.



Freely change luminescence colors and patterns with editing software. Upload colors and patterns using the editing program to the signal tower using a USB cable* connected to a PC.
* The USB cable is sold separately (USB microB type with Charging/ Data Transfer capability).



The alarm has a total of 11 sounds to match various applications. The water-resistant speaker design is able to play clear sounds of up to 85 dB (at 1m) despite its compact size. Alarm sounds can be set up with every display pattern.



An internal Mode Switch is available. Use the internal mode switch to easily set up various functions, such as the alarm volume.



Replacement Parts



- Headcover



- USB Port Cover



- Waterproof Ring 'B'



- Pole Bracket (with Waterproof Ring and Screws)

- Waterproof O-ring

REVOLITE™

• 3 Tier Type



Off-white
Lighting

Silver
Lighting



Off-white
Flashing/Alarm

Silver
Flashing/Alarm

• 5 Tier Type



Off-white
Lighting

Silver
Lighting



Off-white
Flashing/Alarm

Silver
Flashing/Alarm



Steel Pole Type (LJ)

Signal Tower LA6

- Voltage: DC24V
- Alarm: 11 Sounds
- Wiring: 2 types (Screwless Terminal (TN)) or (Cable (LJ))



※ Alarm type is rated at IP54.



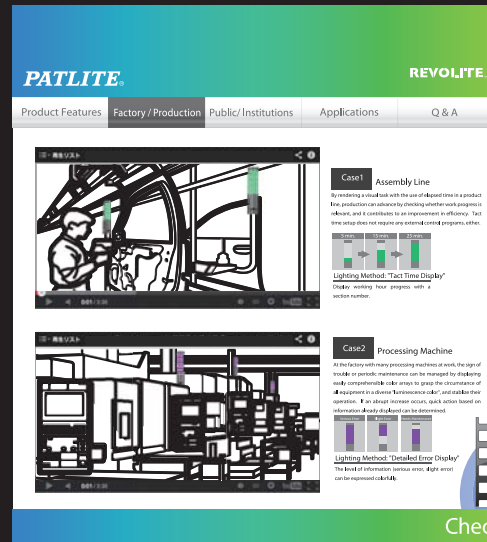
View our videos at our exclusive site for more information.

Features and various product operation modes can be viewed at our exclusive site (www.patlite.com/LA6). The contents introduce actual applications, ideas for applications, and wide-spread potential for this product.



Exclusive Site/ Top Page

* The website design may change without notice.



Exclusive Site/ Application Page

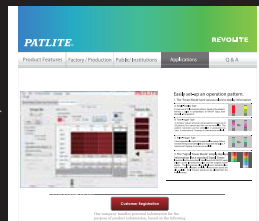
Check out the video on our website!!

Free editing software can be downloaded from our exclusive website.

With the simple editing software available for free, a "luminescence color" and "luminescent pattern" are easily set-up.



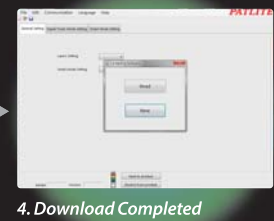
1. Go to our exclusive website



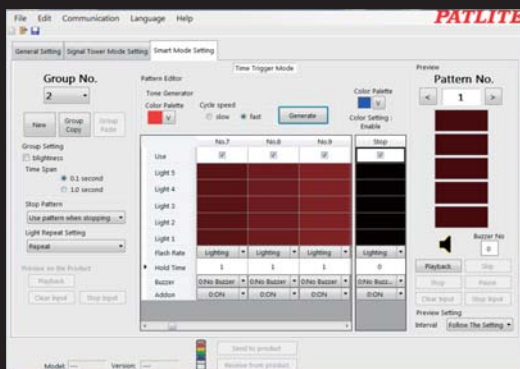
2. Download the Dedicated Software from the website



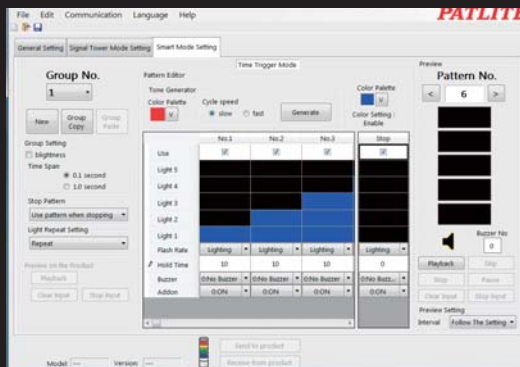
3. Customer registers on a registration page



4. Download Completed



Dedicated software setup screen



* The interface design may be changed without advanced notice.

Easily set up an operation pattern.

1. The "Smart Mode" uses various colors to display information

A. Single-display Type

31 luminescent patterns are stored in the unit's memory and can be set to on/off for 1-5 tiers.



B. Time-trigger Type

Up to 15 groups of up to 63 patterns can be controlled as a continuous flow based on preset times.



C. Pulse-trigger Type

Pulse-trigger Type is activated by discrete inputs instead of time to progress from one pattern to the next, for up to 63 patterns. These can be grouped for up to 15 groups.



2. "Signal Tower Mode"

This mode simply displays information like a standard Signal Tower.

Four new color selections are available in addition to the five standard luminescence colors.



3 Tier Type

5 Tier Type

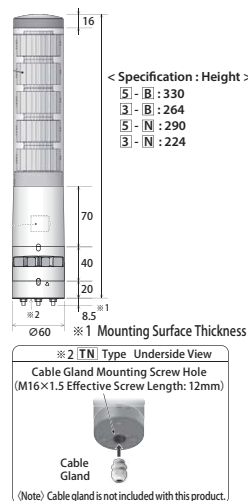
Set-up data can be downloaded.

Several pre-programmed patterns can be uploaded to the unit from the "Information Set."

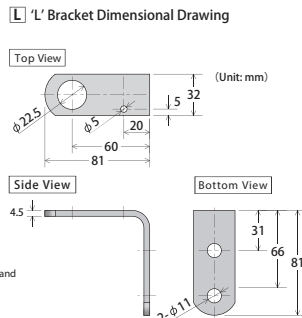
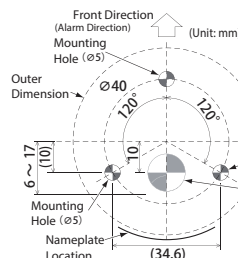
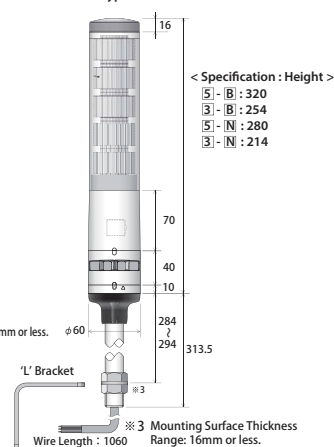
Specifications				
Model	LA6-□ D □□□ - □			
Rated Voltage	DC24 V			
Operating Voltage Range	±10% of Rated Voltage			
Rated Power Consumption	Standard	LA6-5 D □□ N-RYGBGC 5W	LA6-5 D □□ B-RYGBGC 6.5W	
		LA6-3D □□ N-RYG 3.5W	LA6-3D □□ B-RYG 4.5W	
	Maximum	LA6-5 D □□ N-YYYY 7W	LA6-5 D □□ B-YYYY 8W	
		LA6-3D □□ N-YYY 4.5W	LA6-3D □□ B-YY 5.5W	
Environmental Condition	Power Consumption test with alarm set at Alarm Sound No.1 at maximum volume			
Signal Wire Current	Maximum 70mA			
Standby Current	Maximum 15mA			
Operating Ambient Temperature	-25°C to +60°C			
Operating Humidity Range	Less than 90% RH (No Dew or Condensation)			
Storage Temperature Range	-25°C to +60°C			
Storage Humidity Range	Less than 90% RH (No Dew or Condensation)			
Mounting Location	Indoor Only			
Mounting Direction	Upright/Inverted Direction			
Protection Rating	IP65 (With alarm: IP54) IEC 60529			
Environmental Condition	Install in an upright position			
Vibration Resistance	LA6-□□ U □□	Sweep Durability: Total amplitude: 0.3 mmp-p (10 - 57.5 Hz), Acceleration: 20.0 m/s ² (57.5 - 150 Hz) Fixed pitch durability: Acceleration 20.0 m/s ²		
	LA6-□□ TN □□	Sweep Durability: Total amplitude 0.3 mmp-p (10 - 57.5 Hz), Acceleration: 20.0 m/s ² (57.5 - 150 Hz) Fixed Vibration Frequency Durability: Acceleration 10.0 m/s ²		
	JIS C 60068-2-6:2010			
Environmental Condition	Tested while installed in an upright position			
Insulation Resistance	More than 1Mohm at DC500V between the power input lead and chassis.			
Withstand Voltage	500VAC for 1min between terminals and chassis without breaking insulation			
Display Color	red (1000 mcd) yellow (1700 mcd) green (2600 mcd) blue (1000 mcd) white (1250 mcd)			
(Typical Luminous Intensity)	Purple (800 mcd) pink (850 mcd) cyan (2150 mcd) lemon (2150 mcd) * Due to the characteristics of the LED elements, a variation in difference of the color tone and brightness of every product may occur.			
Flash Rate	60 ±2 fpm			
Alarm Sound (Typical Frequency)	No. 1	2400Hz Continuous beep sound	No. 2	2400Hz Rapid intermittent beep
	No. 3	2400Hz Long intermittent beep	No. 4	2400Hz Fast intermittent beep
	No. 5	3600Hz Continuous beep	No. 6	3600Hz Rapid intermittent beep
	No. 7	3600Hz Long intermittent beep	No. 8	3600Hz Fast intermittent beep
	No. 9	2400Hz & 3375Hz Multiplexed Beep	No. 10	2400Hz & 3600Hz Multiplexed Beep
	No. 11	4000Hz & 4800Hz Multiplexed Beep		
	Sound Level	Maximum: 85dB		
	Environmental Condition	Alarm Sound No.1 measured from the front direction of the alarm opening at 1m		
	Volume Control	The set up button is the fourth step (Factory Default: Maximum). [Maximum] -> [-5dB drop from maximum (standard)] -> [-10dB drop from maximum (standard)] -> [OFF] (-> Returns to [Maximum])		
	Data Transfer Interface	Main Unit: USB micro-B Terminal Female USB2.0/1.1 Interface, Transmission Rate: USB2.0/1.1/1.0 Transfer Cable: Charge/Data Transfer Micro USB (not included); Connector: USB Male-USB (MicroB) male		
	Data Programming Application Software	Exclusive Application Software (Downloadable from our Homepage)		
Mass (Tolerance 10%)	LA6-3DTN □ B	480g	LA6-3DLJ □ B	980g
	LA6-3DTN □ N	420g	LA6-3DLJ □ N	930g
	LA6-5 DTN □ B	590g	LA6-5 DLJ □ B	1090g
	LA6-5 DTN □ N	530g	LA6-5 DLJ □ N	1040g
Compliance Standards	EMC Directive (EN 61000-6-4, EN 61000-6-2)	RoHS Directive (EN 50581)		
	UL508, CSA-C22.2 No.14	KC (KN 61000-6-4, KN 61000-6-2)		
	FCC Part 15 Subpart B Class A	CE Marking		
Remarks	UL Recognized Component (File No.E215660)			

Dimensions (Unit:mm)

■ TN Direct Mount / Terminal Bus Type



■ LJ Steel Pole & 'L' Bracket Cable Type



Model Code

Signal Tower LA6- ① D ② ③ ④ - ⑤

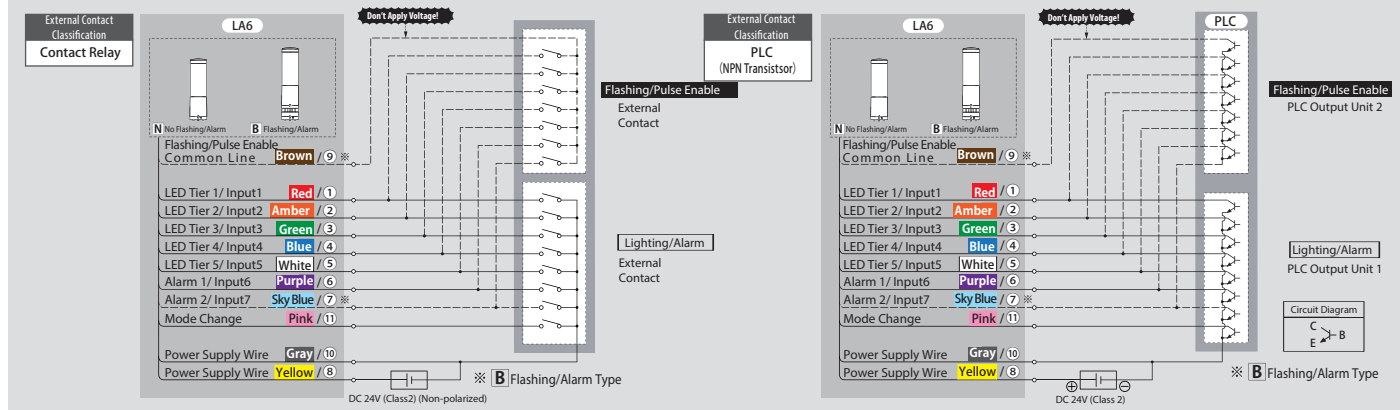
Example: LA6-5DTNUB-RYGBGC

- LED Tiers...5
- Body Color...Silver
- Mounting/Wiring...Direct Mount/Terminal Bus
- Color...Red/Amber/Green/Blue/White
- Flashing·Alarm...with Flash and Alarm

- ① LED Tiers: 3: 3 Tiers, 5: 5 Tiers
- ② Mounting/Wiring: TN: Direct/Terminal, LJ: Steel Pole & Angle, Cable
- ③ Body Color: W: Off-white, U: Silver
- ④ Flashing/Alarm: B: With, N: Without
- ⑤ Color: RYG: 3 Tiers, RYGB: 5 Tiers

*The LED light color for each tier can be changed after purchase. *LJ type does not have a "U" (Silver) specification.

Wiring



<http://www.patlite.com>

PATLITE Corporation

Inaba Bldg 4-11-14 Itachibori, Nishi-ku, Osaka, Japan 550-0012
International Division, Sales and Marketing Department
TEL: +81-6-7688-5400 FAX: +81-6-7688-5401 E-mail: overseas@patlite.co.jp

PATLITE (U.S.A.) Corporation

20130 S. Western Ave. Torrance, CA 90501, U.S.A.
TEL: +1-310-328-3222 FAX: +1-310-328-2676 E-mail: sales@patlite.com

PATLITE (SINGAPORE) PTE LTD

No.2 Leng Kee Road, #05-01 Thye Hong Centre, Singapore 159086
TEL: +65-6226-1111 FAX: +65-6324-1411 E-mail: sales@patlite.com.sg

PATLITE (CHINA) Corporation

Room 512, Jufeng Business Building, No.697-3 Lingshi Road, Shanghai China 200072
TEL: +86-21-6630-8969 FAX: +86-21-6630-8938 E-mail: sales@patlite.cn



To ensure correct use of these products, read the "Instruction Manual" prior to use. Failure to follow all safeguards can result in fire, electric shock, or other accidents. Specifications are subject to change without notice.

PATLITE Europe GmbH

Am Soeldnermoos 8, D-85399 Hallbergmoos, Germany
TEL:+49-811 9981 9770-0 FAX:+49-811 9981 9770-9 E-mail: info@patlite.eu

PATLITE KOREA CO., LTD.

A-2603, Daesung-D-POLIS, 543-1 Gasan-dong, Geumcheon-gu, Seoul, 153-719
TEL:+82-2-523-6636 FAX:+82-2-861-9919 E-mail: sales@patlite.co.kr

PATLITE TAIWAN CO., LTD.

7F. No. 91, Huayin St, Datong District Taipei, Taiwan R.O.C E-mail: info@patlite.tw
TEL:+886-(0)2-2555-1611 FAX:+886-(0)2-2555-1621

PT. PATLITE INDONESIA (FACTORY)

LOT 321 Batamindo Industrial Park, Jalan Beringin Mukakuning, Batam 29433 Indonesia
TEL: +62-770-61-1123 FAX: +62-770-61-2444



ISO14001:2004 Certified
Headquarters/Sanda Plant/Techno Center



Catalog No. O-3108A 1411(P8) M/M(SM)A